

532- Straight Line Push-Pull Type Toggle Clamps

Body Mounting Base: Horizontal Casting

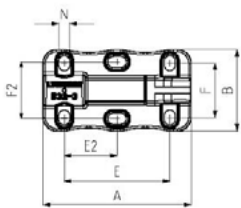
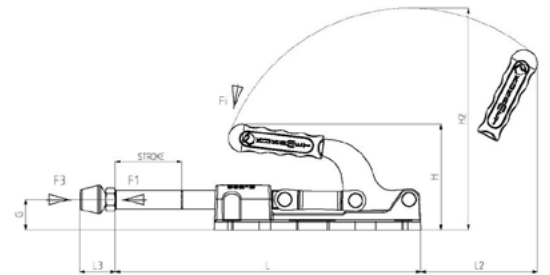
Part Number	F1 (kg)	F3 (kg)	Fi F1:Fi	Compression Screw	Stroke
19-532-3-012	254	377	16:1	M8 x 50	38
19-532-4-018	458	897	23:1	M10 x 70	47
19-532-5-020	764	1881	30:1	M12 x 80	100



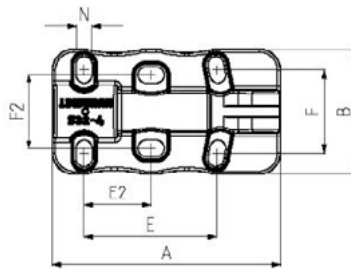
F1 Exerting Force. F3 Holding Capacity. Fi Applied Force

Features

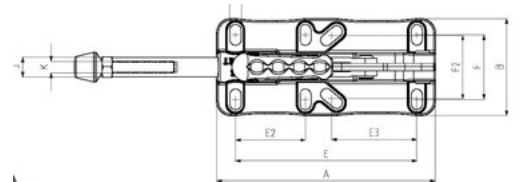
- Strong & suitable for heavy duty use
- Body made from GGG-60 casting material and painted with black electrostatic powder paint
- Rod made from hard chrome plated material for high wear and corrosion resistance
- Mechanism parts made from steel, galvanized for corrosion resistance



19-532-3



19-532-4



19-532-5

Part Number	A	B	E	E2	E3	F	F2	G	H	H2	J	K	L	L2	L3 min	L3 max	N
19-532-3-012	107	59	76.5	35.5-41	-	36.5-42.5	41	17.5	73	127	12	M8	156	81	24	58	8 x 13.5
19-532-4-018	130	71	74.5-75.5	35-41	-	41.5-53	41.5	20.5	86	159	18	M10	188	94	32	81	9 x 15
19-532-5-020	218	96	180.5	70	80-90	55-73	54-70.5	31.8	111	234	20	M12	322	122	39	94	11 x 20.5