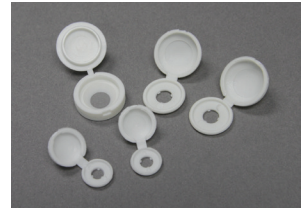
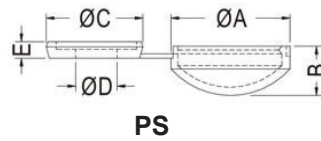


Screw Cap Washers

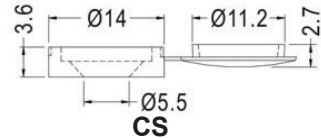
Conceal screw heads • One piece part

Part Number	Screw Head	Screw Size	A	B	C	D	E
03-SCW03PS	Pan	M3	9.8	4.1	8.0	3.3	1.3
03-SCW04PS	Pan	M4 / #8	13.3	4.1	11.6	4.3	1.4
03-SCW05CS	C'Sink	M5 / #10	14.0	2.7	14.0	5.5	3.6



Nylon 6/6 White

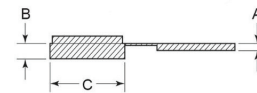
Black available in all sizes



Uniscrew Caps

Polypropylene • Accept a range of screws • Integral washer reduces fitting time

Part Number	Colour	Screw Head	Screw Size	C	B	A
03-CPUM5WN	White	C/sink	M5-M6/#10-12	17.5	5	1
03-CPUM5BN	Black	C/sink	M5-M6/#10-12	17.7	5	1.5



Snap-Caps® Screw Covers and Snap-Caps Washers

Made from high-impact UV Stabilised plastic

Snap Cap Washers are used to conceal many types of screws, bolts, nails, rivets. Your fastener fits securely into the plastic washer and the cap snaps over the washer to completely cover your fastener.

Provides an air-tight seal which prevents corrosion and rust.

Snap-Cap Washers

Part Number	Fits Screw Size	Fits Screw Head
03-SNCW4/5	M2 & M2.5	Pan or Cheese
03-SNCW6/8	M3 & M4	Pan or Cheese
03-SNCW6/8CS	M3 & M4	Countersunk
03-SNCW10/12	M5 & M6	Pan or Cheese
03-SNCW10/12CS	M5 & M6	Countersunk



Flat bottom washer



Countersunk washer

Snap-Caps Screw Covers

Part Number	Screw Size	OD (mm)	Colour
03-SNCC4/5W	M2 & M2.5	11.1	Gloss White
03-SNCC6/8-BLACK	M3 & M4	13.1	Matte Black
03-SNCC6/8-AQUABLUE	M3 & M4	13.1	Matte Aqua Blue
03-SNCC6/8-Buff	M3 & M4	13.1	Matte Buff
03-SNCC6/8-CREAM	M3 & M4	13.1	Matte Cream
03-SNCC6/8-CARAMEL	M3 & M4	13.1	Matte Caramel
03-SNCC6/8-FOREST GN	M3 & M4	13.1	Matte Forest Green
03-SNCC6/8-FOG GREY	M3 & M4	13.1	Matte Fog Grey
03-SNCC6/8-LT GREY	M3 & M4	13.1	Matte Light Grey
03-SNCC6/8-ROYAL BLUE	M3 & M4	13.1	Matte Royal Blue
03-SNCC6/8-RED	M3 & M4	13.1	Matte Red
03-SNCC6/8-WHITE	M3 & M4	13.1	Matte White
03-SNCC6/8-YELLOW	M3 & M4	13.1	Matte Yellow
03-SNCC6/8-CHROME	M3 & M4	13.1	Polished Chrome
03-SNCC10/12GW	M5 & M6	16.1	Gloss White
03-SNCC10/12Red	M5 & M6	16.1	Matte Red
03-SNCC10/12GB	M5 & M6	16.1	Gloss Black
03-SNCC10/12MEDSLATE	M5 & M6	16.1	Medium Slate
03-SNCC10/12-TEAK	M5 & M6	16.1	Matte Teak



Range of other non-stocked colours available