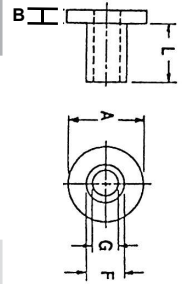


Insulating Washers - Continued

Tough, durable and chemical resistant • Isolate metal screws and reduce corrosion

Part Number	Material	Screw Size	Sleeve			Shoulder	
			I.D.G	O.D.F	Length L	O.D.A	Thickness B
03-5NW4.8	Nylon	M5	5.1	6.6	4.8	10.1	1.6
03-5NW6.3	Nylon	M5	5.1	6.6	6.3	10.1	1.6
03-5NW9.5	Nylon	M5	5.1	6.6	9.5	10.1	1.6
03-SWS0425	Nylon	M5	5.1	6.35	0.79	7.93	1.6
03-SWS1007	Nylon	M5	5.1	7.14	1.2	11.1	1.2
03-SWS0897	Nylon	M5	5.13	7.87	8	11	2.0
03-SWS0804	Nylon	M6	6.0	8.0	4.5	9.02	0.51
03-SWS0940	Nylon	M6	6.1	8.0	4.0	12.27	1.5
03-6NW10	Nylon	M6	6.1	8.0	10.0	12.0	2.0
03-6RX3.2	Nylon	M6	6.3	7.93	3.2	15.2	3.2
03-SWS0905	Nylon	M6	6.3	7.9	1.6	10.8	1.6
03-SWS1034	Nylon	M6	6.4	7.92	0.8	12.7	0.8
03-SWS0610	Nylon	M6	6.5	7.36	1.6	8.83	0.8
03-SWS1005	Nylon	M6	6.5	7.9	2.0	11.8	0.4
03-SWS1012B-UV**	Nylon	M6	6.76	17.7	3.18	9.11	1.6
03-6NW3.2	Nylon	M6	6.6	7.9	3.2	13.0	1.6
03-6NW3.2BV	Nylon	M6	6.6	7.9	3.2	13.0	1.6
03-6NW4.8	Nylon	M6	6.6	7.9	4.8	13.0	1.6
03-6NW4.8B-UVV**	Nylon	M6	6.6	7.9	4.8	13.0	1.6
03-6NW6.3	Nylon	M6	6.6	7.9	6.3	13.0	1.6
03-6NW9.5	Nylon	M6	6.6	7.9	9.5	13.0	1.6
03-6NW12.7	Nylon	M6	6.6	7.9	12.7	13.0	1.6
03-6NW12.7BV*	Nylon	M6	6.6	7.9	12.7	13.0	1.6
03-SWS2586	Nylon	-	7.14	12.7	6.3	19	3.2
03-SWS3510	Nylon	-	7.77	11.30	10.3	20.9	2.3
03-SWS1027	Nylon	M8	7.9	9.27	12.7	12.7	1.6
03-8NW3.2	Nylon	M8	8.1	9.1	3.2	15.7	1.6
03-8NW3.2B-UVV**	Nylon	M8	8.1	9.1	3.2	15.7	1.6
03-8NW6.4	Nylon	M8	8.1	9.1	6.35	15.7	1.6
03-8NW12.7	Nylon	M8	8.1	9.1	12.7	15.7	1.6
03-8NW15.9	Nylon	M8	8.1	9.1	15.9	15.7	1.6
03-SWS1211	Nylon	M8	8.13	10.3	3.53	15.9	1.6
03-SWS1211BV*	Nylon	M8	8.13	10.3	3.53	15.9	1.6
03-SWS3601	Nylon	M8	8.26	11.05	4.76	25.4	6.3
03-SWS2504	Nylon	M8	8.33	11.1	3.18	17.45	3.18
03-8NW9.0B*	Nylon	M8	8.5	12.8	9.0	25.0	4.5
03-SWS1155	Nylon	M8	8.5	9.4	1.2	14.3	0.6
03-SWS1161	Nylon	-	9.0	10.0	15.75	14.3	1.6
03-SWS3562	Nylon	-	9.7	14.1	6.4	24.9	3.2
03-SWS3021	Nylon	-	9.91	12.57	11.2	18.8	1.59
03-SWS2532	Nylon	-	9.93	13.8	3.9	18.9	2.5
03-SWS3564	Nylon	M10	10.3	13.87	6.3	24.8	3.2
03-SWS3565	Nylon	M10	10.1	13.89	15.7	25	1.5
03-SWS3520	Nylon	M10	10.3	11.9	13.5	24.0	2.0
03-SWS3520B*	Nylon	M10	10.3	11.9	13.5	24.0	1.9
03-SWS2515	Nylon	M10	10.67	11.94	10.67	18.03	1.9
03-SWS4007	Nylon	-	11	27.8	5.2	44.2	5.2
03-SWS4006	Nylon	M12	12.0	13.4	10.3	31.8	1.6
03-SWS2587	Nylon	M12	12.7	15.8	11.1	19	1.6
03-SWS3589	Nylon	M12	12.8	18.8	15.7	25.2	3.2
03-SWS2571	Nylon	-	13.1	14.7	8.13	19	0.8
03-SWS3102	Nylon	-	13.2	15.7	12.7	20.9	1.6
03-SWS4005	Nylon	-	13.7	15.2	10.3	31.8	1.6



* = Black Nylon 6/6
 ** = UV resistant
 Black Nylon 6/6