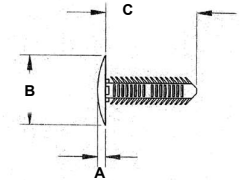


Barbed Clips - XTM Metric Series

Part Number	Hole Size	Panel Thickness	Head Diameter B	Head Height A	Length C
04-XTM408	4.0	1.6-6.0	11.2	2.0	8.3
04-XTM509	5.0	1.6-6.0	14.0	2.0	8.5
04-XTM528	5.0	1.6-26.0	14.0	2.0	28.3
04-XTM609	6.0	1.6-6.0	16.8	2.0	9.3



Material: Black Nylon 6/6 – UV Resistant

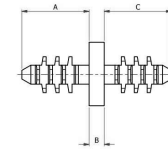


Double End Barb Clip

Allows two panels to be connected from the centre so no fastener head is visible

Part Number	Hole Size	Panel Range	D	B	A & C
04-PRCD7578BM	7.5	3.0 - 8.0	19	1	17.5

Material: Black Nylon 6/6



Panel Latch

Ideal for inspection panels or door latches • A simple pull is all that's required to close or open the panel

Fast, economical assembly to lock panel in place. Supplied in two parts, the pin is fitted to the grommet through a hole in the opening panel, then the grommet is inserted into the hole in the fixed panel.

Part Number	Hole Diameter		Grommet Length L	Knob Diameter	Knob Style	A Panel Thickness A	Overall Thickness H
	A Panel Dia.	B Panel Dia.					
04-PDL5	4.5	4.8	9.5	6.4	DL-5	1.6	2.0 - 3.6
04-PDL3	6.0 - 6.1	6.3 - 6.5	10.4	8.5	DL-3	1.6	2.0 - 4.2
04-PDL4	6.0 - 6.1	6.3 - 6.5	11.4	8.5	DL-4	2.5	3.0 - 5.2
04-PDL11	7.5	8.0	10.5	15.7	DL-11	1.6	2.0 - 4.2
04-PDL2	7.5	8.0	11.1	15.8	DL-2	1.6	2.0 - 4.2

Material: Black Nylon 6/6

