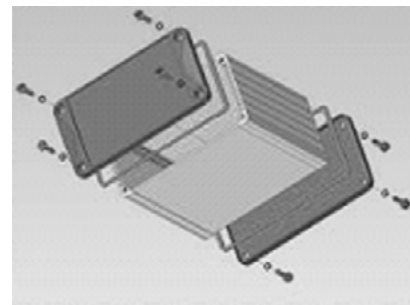
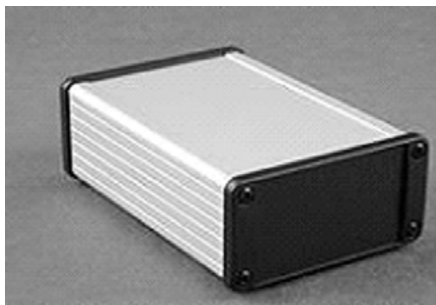


Hammond Instrument Extruded Aluminium Boxes - 1457 / 1457E EMI/RFI and IP65 types

Available in clear or black anodized.

- Rugged one piece extruded aluminium body with a recessed area for labels or membrane keypad.
- PCB slide into extruded internal slots. (standard Eurocards)
- Version 1 includes two diecast Al. end panels.
- Version 2 has diecast Al. end panels with mtg flange.
- Hardware and self adhesive rubber feet included.
- 1457E version includes two-end plate EMI/RFI gaskets.



1457 Watertight IP 65 - External Dimension

Part Number						
		Flanged Ends				
Clear	Black	Clear	Black	Length	Width	Height
26-1457C801	26-1457C801BK	26-1457C802	26-1457C802BK	80	59	30.9
26-1457C1201	26-1457C1201BK	26-1457C1202	26-1457C1202BK	120	59	30.9
26-1457K1201	26-1457K1201BK	26-1457K1202	26-1457K1202BK	120	84	44.1
26-1457K1601	26-1457K1601BK	26-1457K1602	26-1457K1602BK	160	84	44.1
26-1457N1201	26-1457N1201BK	26-1457N1202	26-1457N1202BK	120	104	54.6
26-1457N1601	26-1457N1601BK	26-1457N1602	26-1457N1602BK	160	104	54.6

1457E EMI / RFI Gaskets IP 54 - External Dimension

Part Number						
		Flanged Ends				
Clear	Black	Clear	Black	Length	Width	Height
26-1457C801E	26-1457C801EBK	26-1457C802E	26-1457C802EBK	80	59	30.9
26-1457C1201E	26-1457C1201EBK	26-1457C1202E	26-1457C1202EBK	120	59	30.9
26-1457K1201E	26-1457K1201EBK	26-1457K1202E	26-1457K1202EBK	120	84	44.1
26-1457K1601E	26-1457K1601EBK	26-1457K1602E	26-1457K1602EBK	160	84	44.1
26-1457N1201E	26-1457N1201EBK	26-1457N1202E	26-1457N1202EBK	120	104	54.6
26-1457N1601E	26-1457N1601EBK	26-1457N1602E	26-1457N1602EBK	160	104	54.6